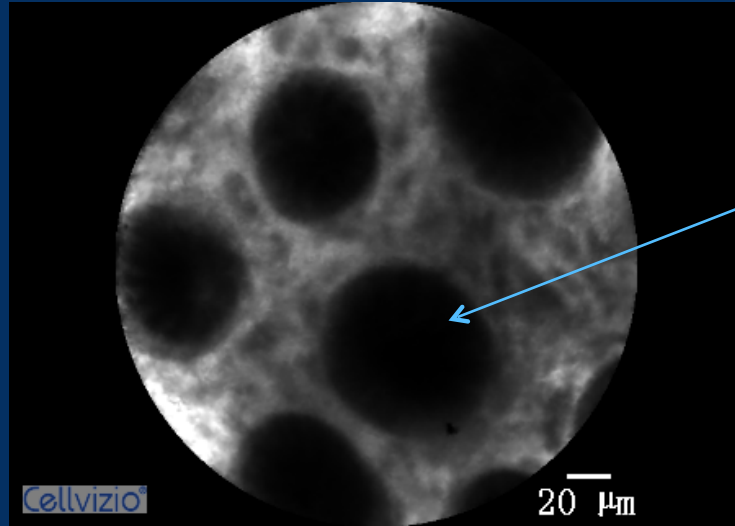


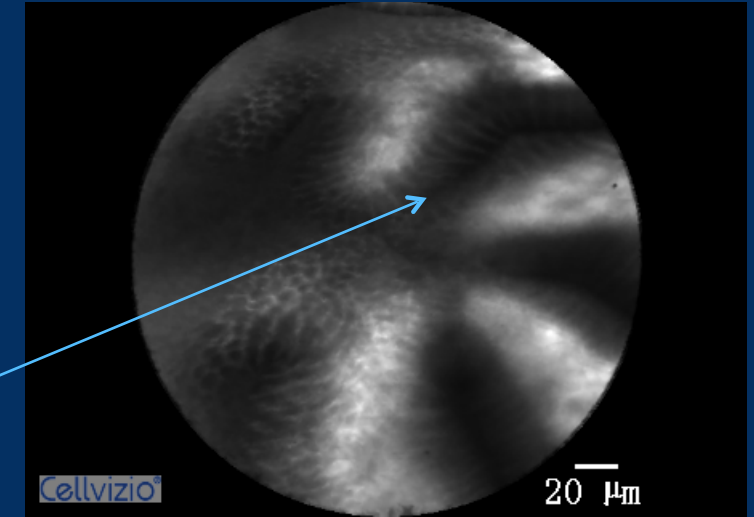
# Optical Biopsy in Gastric Lesions\*

## Normal Gastric Mucosa

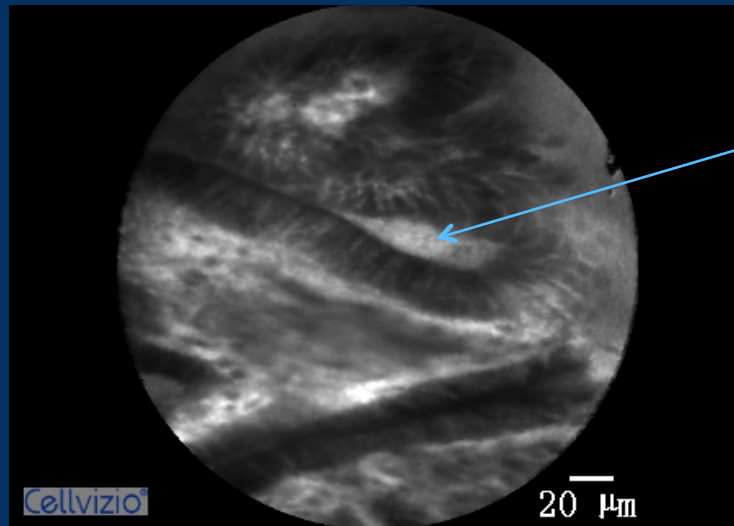


Regular pits with round openings in fundus

Continuous short rod like pits with slit like openings in pylorus

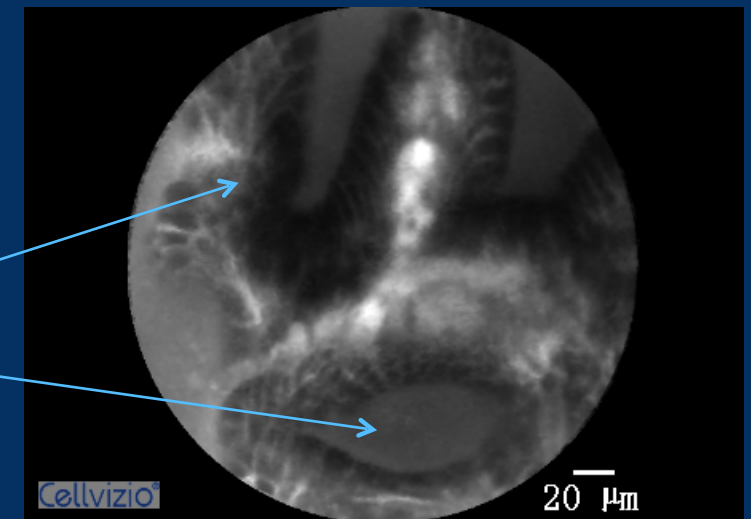


## Chronic Gastritis

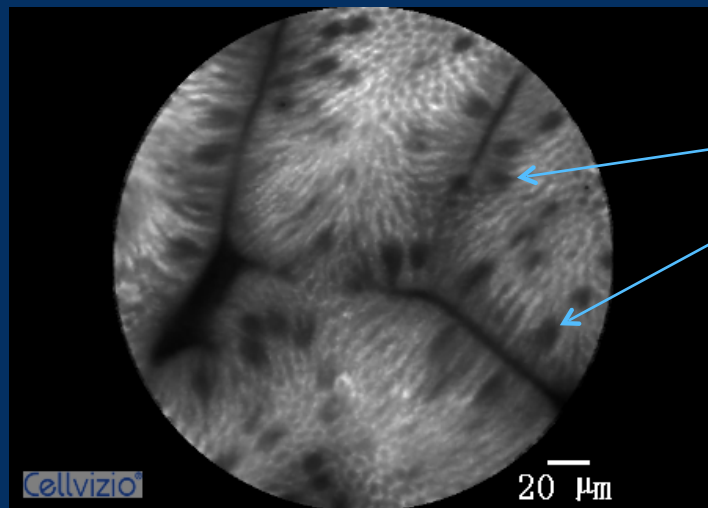


Tortuosity/branching of elongated pits  
— **GASTRITIS**

Glandular atrophy with decreased gastric pits and markedly dilated opening  
— **ATROPHIC GASTRITIS**

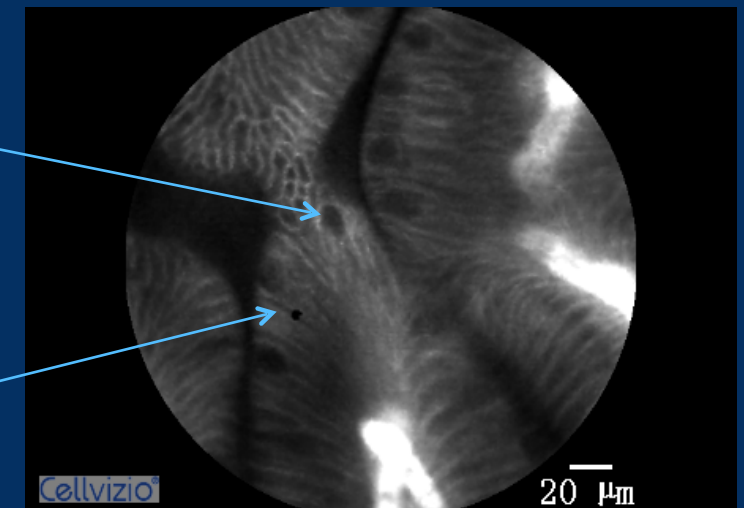


## Intestinal Metaplasia

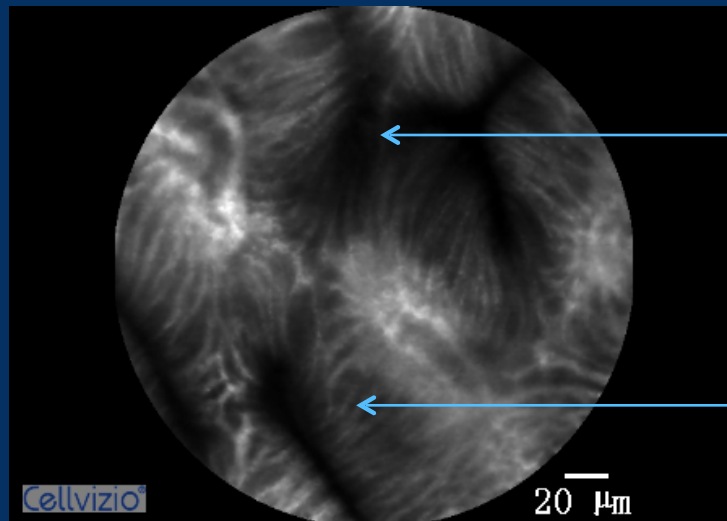


Dark goblet cells within the columnar epithelium

Columnar epithelium with villous appearance

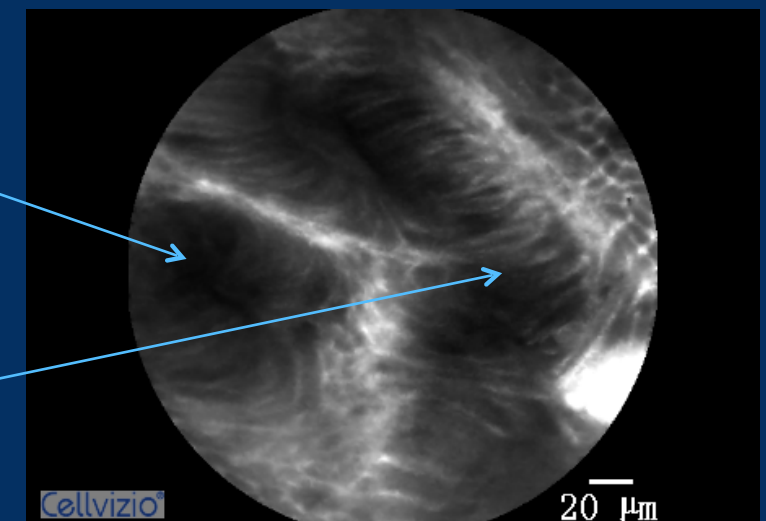


## Low Grade Intraepithelial Neoplasia

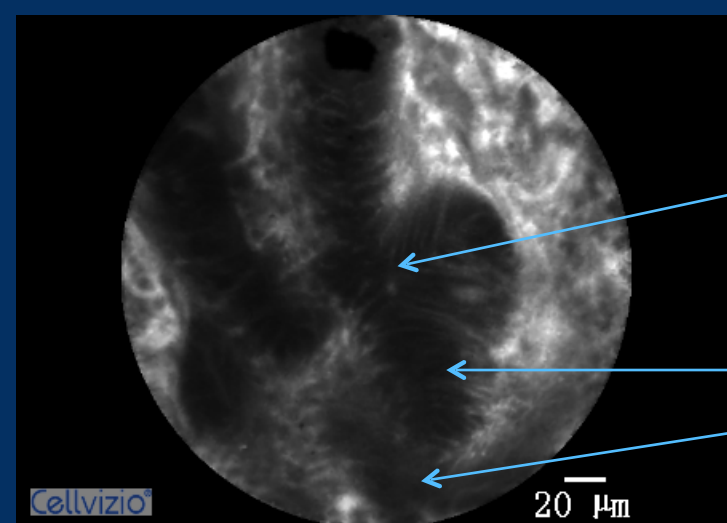


Mild to moderate irregular pits

Variable width of the epithelial lining

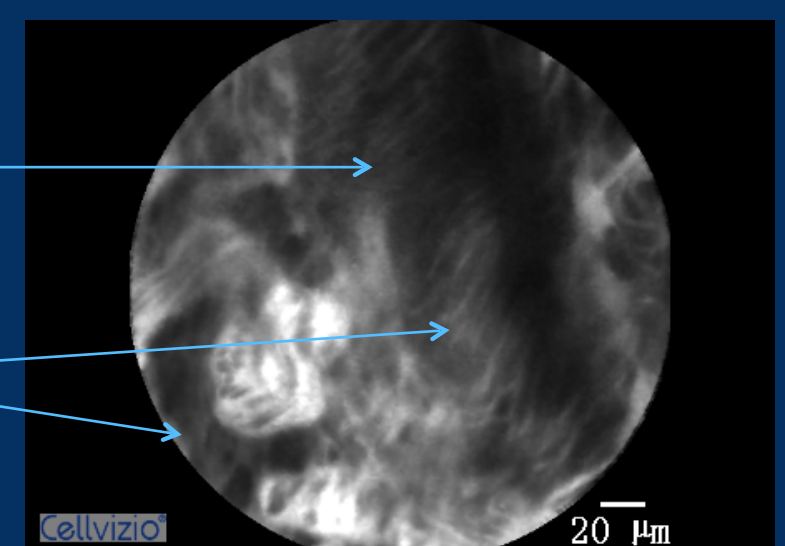


## High Grade Intraepithelial Neoplasia

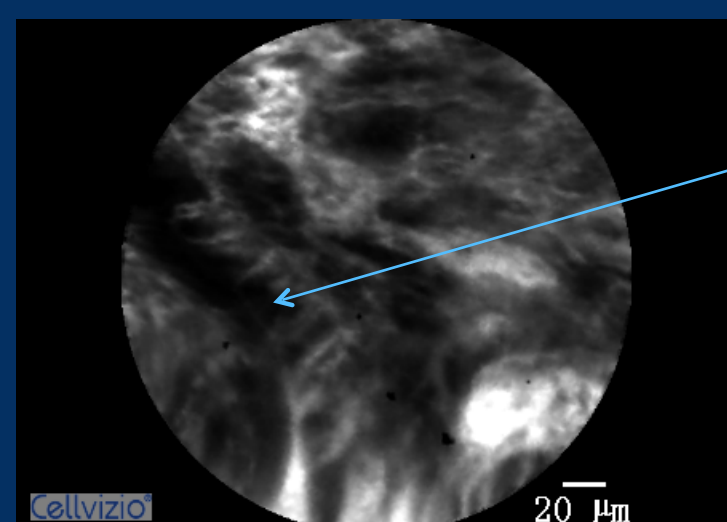


Prominent distorted pits

Variable width of the epithelial lining

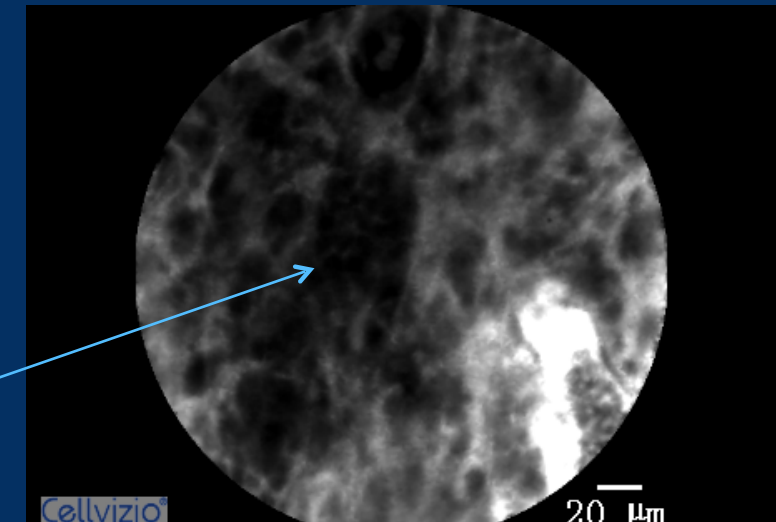


## Cancer



Atypical/naïve glands with dark epithelium  
— **DIFFERENTIATED ADENOCARCINOMA**

Loss of pits, appearance of irregular dark cells  
— **POORLY DIFFERENTIATED ADENOCARCINOMA**



\*This poster is a brief introduction of Qilu pCLE Classification of Gastric Pit Patterns. Qilu pCLE Classification includes also Vessel Architecture Classification. Detailed description please refer to the original article.